

## Pattern of the Month

January 2014

*For Members of the MQG*



**MODERN QUILT GUILD**



## Broken Bars

by Rebecca Roach  
*Austin MQG Member*

The Modern Quilt Guild's mission is to support and encourage the growth and development of modern quilting through art, education and community. [www.modernquiltguild.com](http://www.modernquiltguild.com)

Copyright © 2014 by Rebecca Roach. Used with permission by the Modern Quilt Guild. All rights reserved. This pattern or any portion thereof may not be reproduced, sold, commercialized or distributed in any manner whatsoever without the express written permission of Rebecca Roach.

# BROKEN BARS

A 56"x72" Quilt By Rebecca Roach

frybreadquilts.wordpress.com

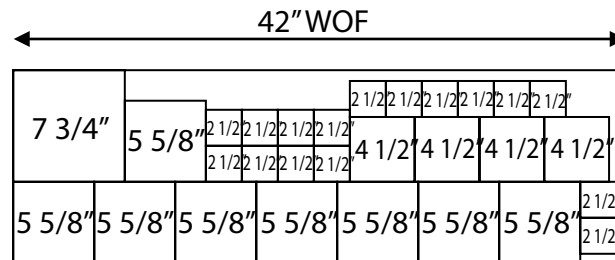
## FABRIC REQUIREMENTS

2.5 yds Essex Yarn Dyed Linen in Black  
 2 yds Kona Cotton in Riviera Blue  
 4 yds Backing

Cut the Following:	Black Essex	Blue Kona
7 3/4" Squares	1	2
5 5/8" Squares	8	4
4 1/2" Squares	4	4
2 1/2" Squares	16	16
5 1/4" x WOF* Strips	7	5
3 3/4" x WOF Strips	7	5
2 1/2" x WOF Binding	2	5

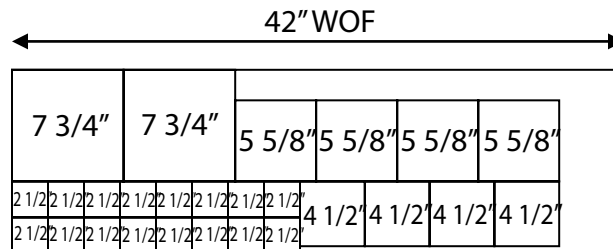
\*WOF means "Width of Fabric"

## RECOMMENDED BLACK ESSEX CUTTING DIAGRAM



\*After cutting squares, use the remaining fabric to cut the WOF strips from the cutting chart.

## RECOMMENDED BLUE KONA CUTTING DIAGRAM

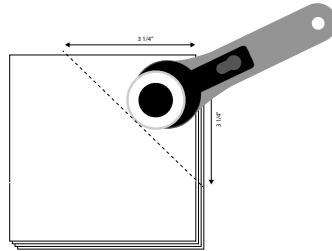


\*After cutting squares, use the remaining fabric to cut the WOF strips from the cutting chart.

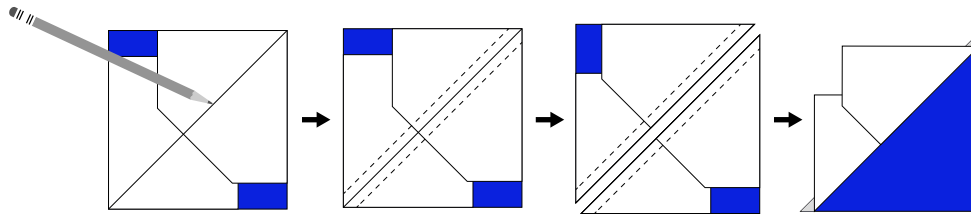
Further Subcut the WOF strips into rectangles according to the measurements in the Layout Diagram (page 4). Some rectangles are larger than the WOF and will need to be pieced together.

## LARGE FLYING GEESSE BLOCKS

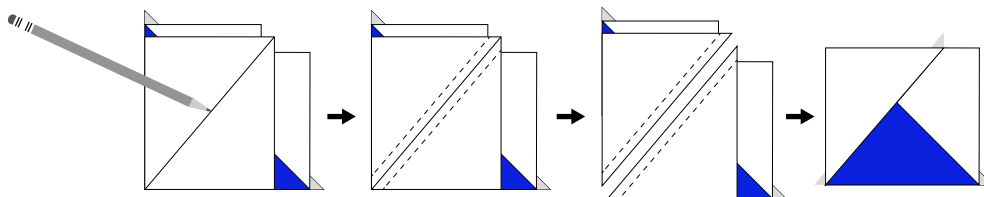
1. (a) Stack four of the 5 5/8" Black squares. (b) Measure 3 1/4" up from one corner in both directions and mark these points. (c) Line up your ruler with these marks and slice off the corner.



2. (a) Place two of the clipped squares on top of a 7 3/4" Blue Square and align them with the opposite corners. (b) Draw a diagonal line across the clipped blocks from corner to corner. (c) Sew a quarter inch away on both sides of the line. (d) Cut down the line to separate. (e) Press the seams towards the Black triangles. (f) Repeat this step with the remaining 7 3/4" Blue square and two clipped Black squares.



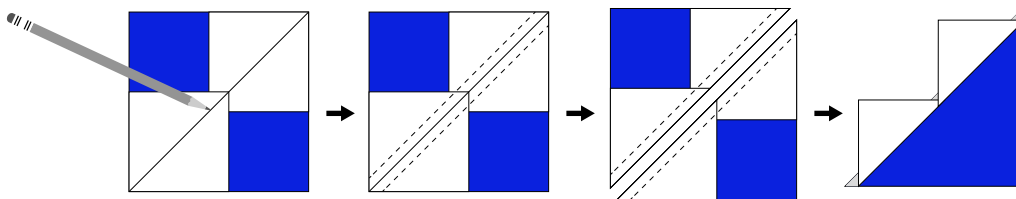
3. (a) Align an unclipped 5 5/8" Black square on the top corner of a Blue half square triangle. (b) Draw a diagonal line from corner to corner. (c) Sew a quarter inch away on both sides of the line. (d) Cut down the line to separate. (e) Press the seam towards the Black triangle. (f) Repeat this step for the remaining pieces.



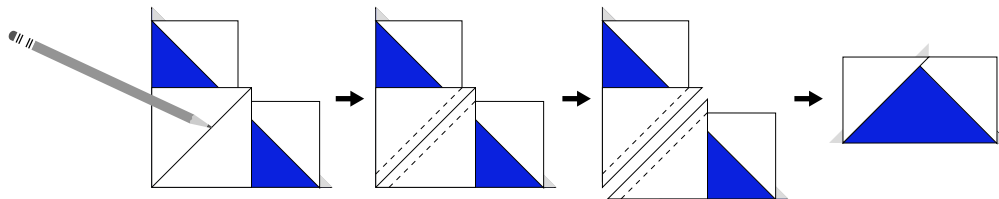
4. Repeat Steps 1-3 with the opposite color large squares. This time, there are half as many finished geese, so only clip the corners off two of the 5 5/8" Blue squares.

## SMALL FLYING GEESE BLOCKS

5. NOTE: These blocks are made in the conventional way and do not require clipping. (a) Place two of the 2 ½" Black squares on top of a 4 ½" Blue Square and align them with the opposite corners. (b) Draw a diagonal line across the blocks from corner to corner. (c) Sew a quarter inch away on both sides of the line. (d) Cut down the line to separate. (e) Press the seams towards the Black triangles. (f) Repeat this step with the three remaining 4 ½" Blue squares and six 2 ½" Black squares.



6. (a) Align a 2 ½" Black square on the top corner of a Blue half square triangle. (b) Draw a diagonal line from corner to corner. (c) Sew a quarter inch away on both sides of the line. (d) Cut down the line to separate. (e) Press the seam towards the Black triangle. (f) Repeat this step for the remaining pieces.



7. Repeat Steps 5-6 with the opposite color small squares.

8. Arrange all of the flying geese blocks along with the subcut WOF strips according to the Layout Diagram on page 4.

9. Sew into rows and then continue piecing until the quilt top is complete. TIP: Fold each row in half and press a center crease to use for aligning the pieces. Pin or glue baste from the center towards the edges to keep these large pieces straight and true.

10. Layer with batting and backing fabric, then quilt as desired.

# LAYOUT DIAGRAM

Seam Allowances included

